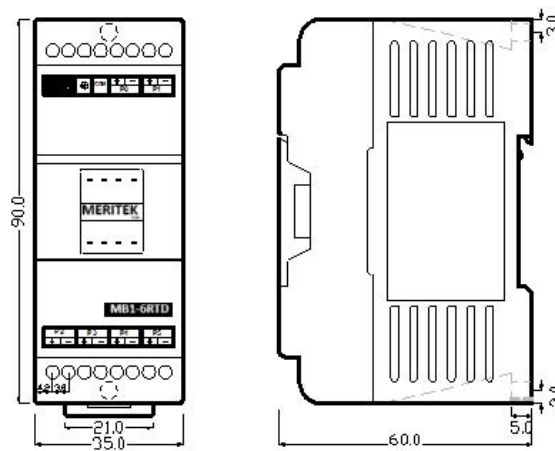


MB1-6RTD – Right Side 6 Channel RTD Temperature Input Module

Introduction

MB1-6RTD is one of the temperature input modules of MERITEK MB1 series PLC. It provides 6 channels of RTD temperature measurement input with 0.1 °C or 1°C resolution. The scan rate for 0.1°C resolution is 2 seconds, while the scan rate for 1 °C resolution is 1 second. This module provides three-wire connection for RTD temperature sensor, thus can automatically compensate the resistance introduced by the wiring. All the optional features of this module are software configurable, there are no hardware jumpers or switches for user to setup.

Dimension



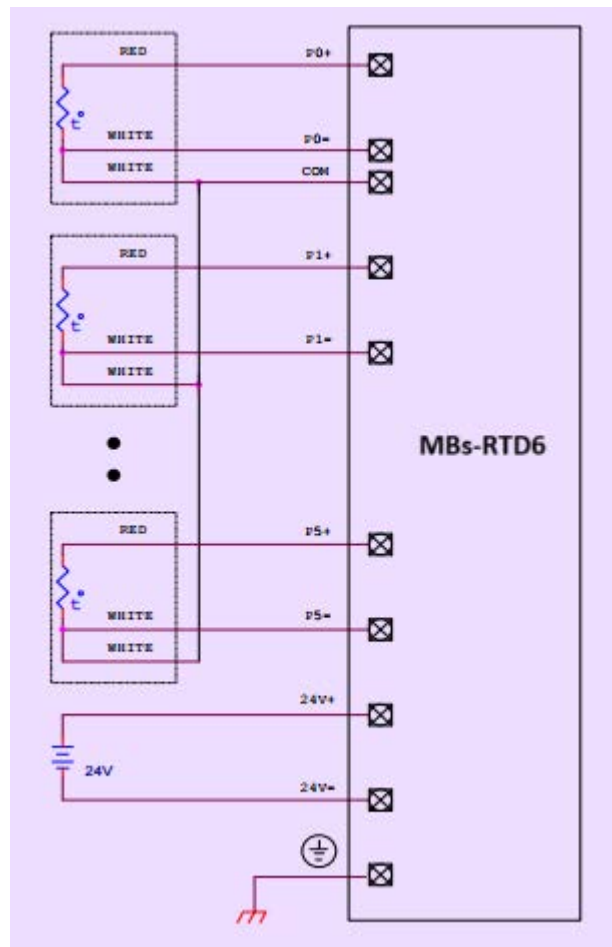
Specifications

Expansion Type	Right Side
Total Channels	6 CH
Resolution	0.1°C or 1°C
I/O Points Occupied	1 RI(Input Register) and 8 DO
Conversion Time	1 or 2 Seconds
Accuracy	±1 %
Sensor Type	Pt-100, Pt-1000 (JIS or DIN)
Software Filter	Moving Average
Average Samples	1, 2, 4, 8, 16 Samples
Measurement Range	Pt-100: -200 ~ 850°C Pt-1000: -200 ~ 600°C
Isolation	Transformer (Power) and Photo-couple (Signal)
Indicator(s)	5V PWR LED
Supply Power	24V-15%/+20%, 2VA
Internal Power Consumption	5V, 35mA
Operating Temperature	0 ~ 60 °C
Storage Temperature	-20 ~ 80 °C

Case Type Support	Standard Case
Dimensions	35(W)x90(H)x60(D) mm

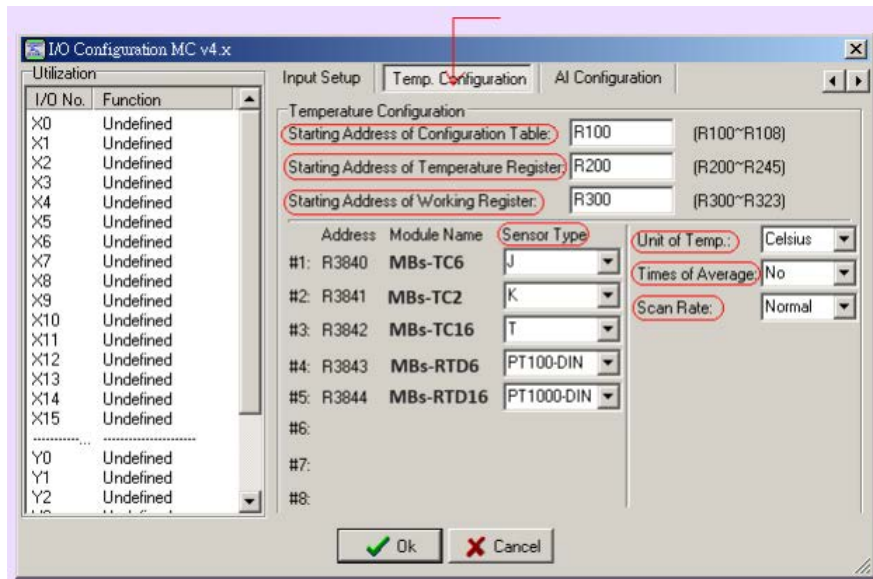
※ MB1 main unit can only support up to two temperature input modules at the same time.

Wiring Diagram



I/O Configuration

Before the temperature value can be retrieved, the user should perform the I/O configuration of temperature module with the help of Winproladder software. The following screen will be shown when perform the I/O configuration.



The user need to assign a starting register of a contiguous register area for holding temperature reading value and areas for storing the configuration table and working scratchpad and define the sensor type, unit of temperature, scan speed and samples for average.